



Precision Lightener



BLONDME Precision Lightener was created for precise on scalp and regrowth services and is formulated with Integrated Anti-Metal Bond Protection Technology to protect the hair fiber during processing.

How to Use:

- Always apply on dry hair
- Up to 7 levels of lift
- Suitable for hair bases 3–8
- Suitable for on-scalp applications
- Mix with BLONDME Bleach & Tone when you want to lighten and tone at the same time!

Expert Tip:

BLONDME Precision Lightener was formulated with an Integrated Temperature-Balancing Complex which can help provide a cooling effect on the scalp during the lightening process.

Good-to-know:

Levels of Lift	Developer Strength	Mixing Ratio
Up to 3	2% (7 Vol.)	1:1.5
Up to 7	6% (20 Vol.)	1:1.5

Regrowth Application



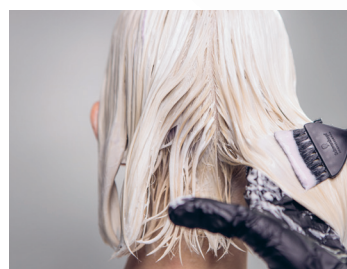
STEP 1:
Section into 4 parts; 3 vertical and 1 horizontal at the crown.



STEP 2:
Apply BLONDME Precision Lightener + BLONDME Premium Developer 2% (7 Vol.) (1:1.5) onto the roots in fine sections.



STEP 3:
Leave to develop for up to 45 minutes, allow visual control.
Rinse until water runs clear. Use COOL BLONDES Neutralizing Shampoo and treat with COOL BLONDES Neutralizing Mask.



STEP 4:
Apply BLONDME Pastel Toning Ice + Clear (1:2) + BLONDME Premium Developer 2% (7 Vol.) (1:1).
Leave to develop for up to 20 minutes. Rinse until water runs clear. Treat with ALL BLONDES Rich Conditioner if required.

Bleach & Tone

Lighten while neutralizing in one step to create your ideal base. Achieve your ideal tone and choose from with choice of three different additives (Violet, Ash or Matte) for targeted neutralization.



Shade Assortment:

- 
B – VIOLET ADDITIVE
 Specially designed to neutralize yellow tones on bases 7
- 
B – ASH ADDITIVE
 Specially designed to neutralize orange-yellow tones on bases 5–6
- 
B – MATTE ADDITIVE
 Specially designed to neutralize red-orange tones on bases 1–4

Tip for Premium Lightener 9+:

Formulation for Bleach & Tone with Premium Lightener should always equal 105 mL.

Base	PREMIUM LIGHTENER 9+	MIX	On-scalp		Off-scalp	
			BLEACH & TONE	PREMIUM DEVELOPER	BLEACH & TONE	PREMIUM DEVELOPER
6–7	35g	Intense	5 mL	65 mL, 2% (7 Vol.) or 6% (20 Vol.)	10 mL	60 mL, 2% (7 Vol.) or 6% (20 Vol.)
		Soft	1 mL	69 mL, 2% (7 Vol.) or 6% (20 Vol.)	5 mL	65 mL, 2% (7 Vol.) or 6% (20 Vol.)
4–5		Intense	10 mL	60 mL, 6% (20 Vol.)	15 mL	55 mL, 9% (30 Vol.)
		Soft	5 mL	65 mL, 6% (20 Vol.)	10 mL	60 mL, 9% (30 Vol.)
3		Intense	10 mL	60 mL, 6% (20 Vol.)	15 mL	55 mL, 12% (40 Vol.)
		Soft	5 mL	65 mL, 6% (20 Vol.)	10 mL	60 mL, 12% (40 Vol.)

Tip for Precision Lightener:

Formulation for Bleach & Tone with Precision Lightener should always equal 75 mL.

Base	PRECISION LIGHTENER	On-scalp		Intense Mix		Soft Mix	
		BLEACH & TONE	PREMIUM DEVELOPER	BLEACH & TONE	PREMIUM DEVELOPER	BLEACH & TONE	PREMIUM DEVELOPER
6–7	30g	5 mL	40 mL, 2% (7 Vol.) or 6% (20 Vol.)	1 mL	44 mL, 2% (7 Vol.) or 6% (20 Vol.)	5 mL	40 mL, 6% (20 Vol.)
3–5							

Tip for Clay Lightener:

Formulation for Bleach & Tone with Clay Lightener should always equal 75 mL.

Base	CLAY LIGHTENER	Off-scalp		Intense Mix		Soft Mix	
		BLEACH & TONE	PREMIUM DEVELOPER	BLEACH & TONE	PREMIUM DEVELOPER	BLEACH & TONE	PREMIUM DEVELOPER
5–7	30g	15 mL	30 mL, 6% (20 Vol.), 9% (30 Vol.) or 12% (40 Vol.)	10 mL	35 mL, 6% (20 Vol.), 9% (30 Vol.) or 12% (40 Vol.)		



Flexible Mixing Concentrations for specific tonal effects on different bases.

Intense Mix:

For the strongest neutralization effect on darker hair bases.

Soft Mix:

For optimal neutralization effects to create neutral blonde tone directions on lighter hair bases.