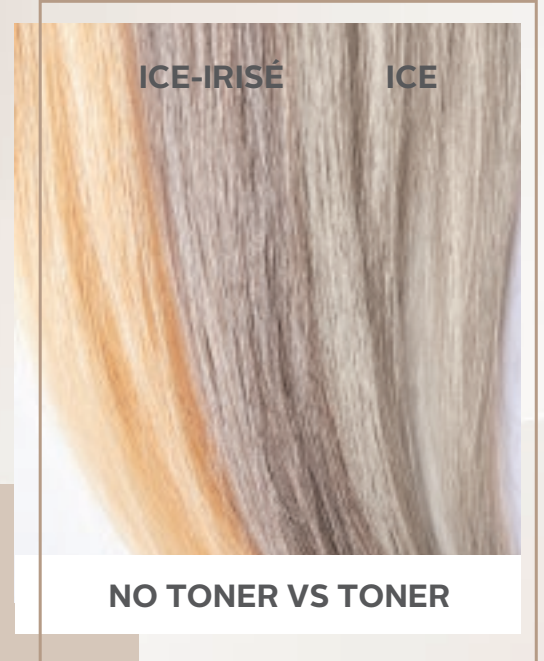


# BLONDME

## WHY USE A TONER?



A Toner is like the icing on a cake - You would never buy a cake without it!



Only a toner ensures superior blonde results - for perfectly balanced neutralisation & sophisticated tone enhancement!

## WHY USE BLONDME?

New BLONDME Toners with Bond Enforcing Hydrolock Technology and pH neutral application Toner formulation for improved moisturisation and minimised hair damage, and optimal longevity.

Post-lightening, Pre-toning using just Shampoo and Mask



Standard Blonde Toning Service with an **Alkaline** Toner formulation



Cuticles are re-opened

Blonde Toning Service with **pH neutral BLONDME** Toner formulation



Cuticles remain unaffected

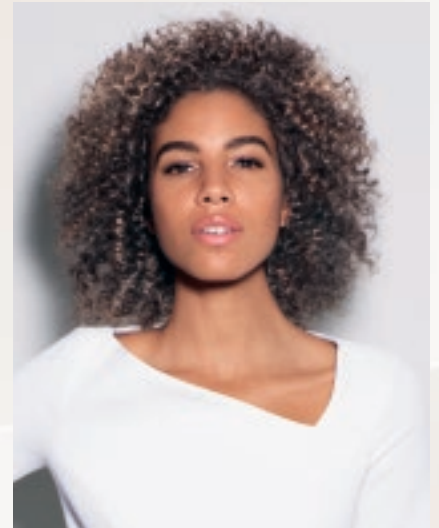
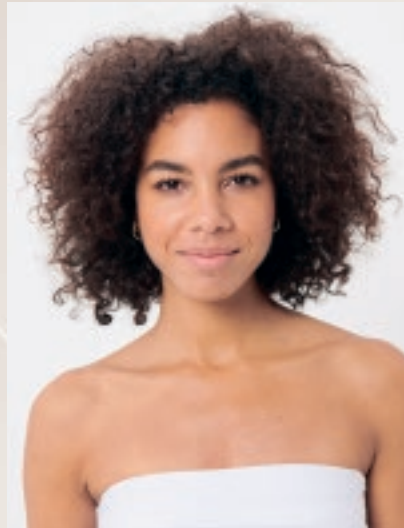
*Together. A passion for hair.*

# BLONDME



## WHEN TO USE A DEEP TONER?

CREATE OPTICAL DIMENSION ON PREVIOUSLY LIGHTENED DARK BASES



- For blurred roots and low-lights on bases 5-8
- Ideal to darken Pastel Tones
- To enrich dark/medium Blonde hair
- Helps to protect the integrity of the hair

Ideal hair base for Deep Toning				
Base	Milk Chocolate	Nougat	Granite	Deep Chestnut
10				
9	+++			
8	++	+++		
7	+	++	+++	+++
6		+	++	++
5			+	+

+ Subtle ++ Ideal +++ Intense

Counteract unwanted warmth with Deep Toning		
8		Milk Chocolate
7		Nougat
6		Deep Chestnut / Granite

*Together. A passion for hair.*