



Schwarzkopf
PROFESSIONAL

BLONDME

BLONDE TONING



Use BLONDME Blonde Toning to ensure superior blonde results - for perfectly balanced neutralization & sophisticated tone enhancement!



LOOK CREATED BY JACK HOWARD

@JACKHOWARDCOLOR

LEADING BALAYAGE EDUCATOR

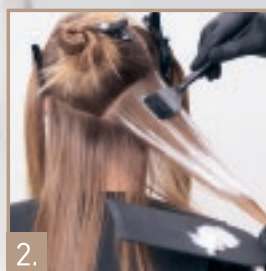
- BLONDME Global Ambassador
- Color World Commercial Genius 2019
- BHBA Social Stylist 2019



1.

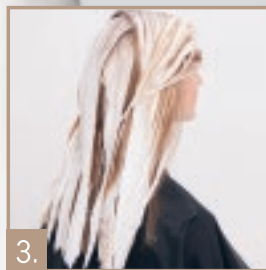
COLOUR APPLICATION:

1. Start off by sectioning the hair as shown. Mix BLONDME Bond Enforcing Premium Clay Lightener with BLONDME Premium Developer 12%/40 Vol. (1:1.5).



2.

2. Begin the application by loading the product in the middle part of the section, then feather upwards, and gradually deposit it towards the ends.



3.

3. Continue with the product application section by section, focusing on the mid-lengths and ends throughout the entire look.

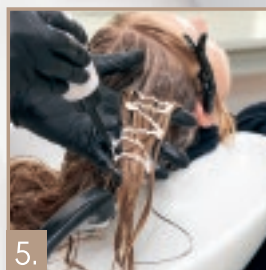
Once application is complete, leave in for up to 45 minutes - check development at regular intervals



4.

REMOVAL:

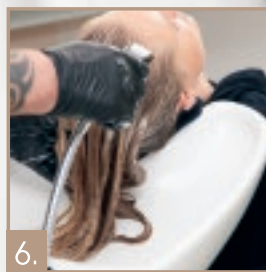
4. Use BLONDME Keratin Restore Bonding Shampoo and rinse thoroughly. Apply BLONDME Keratin Restore Bonding Mask for up to 5 minutes to rebalance the hair after the lightening process.



5.

TONER APPLICATION:

5. Tone the hair using BLONDME Blonde Toning Biscuit + Sand (1:1) with BLONDME Premium Developer 2%/7 Vol. Developer. Mixing ratio 1:1. Apply with an applicator bottle. Start at the roots leaving out the front section. After 5 minutes work through mid-lengths and ends. For the last 5 minutes work into the front section. Total development time 15 minutes to create the perfect blend.



6.

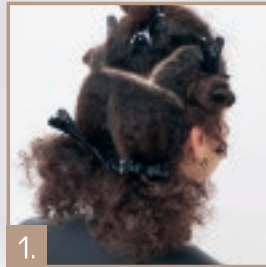
FINAL CARE SERVICE

6. Rinse. Do not shampoo after toning! Apply BLONDME Keratin Restore Bonding Mask and leave for up to 5 minutes.

Together. A passion for hair.

BLONDME

BLONDE TONING



1.

COLOUR APPLICATION:

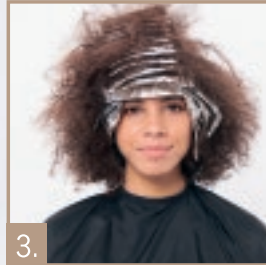
1. Start off by sectioning the hair as shown. Mix BLONDME Bond Enforcing Premium Lightener 9+ with BLONDME Premium Developer 6%/20 Vol. (1:2).



2.

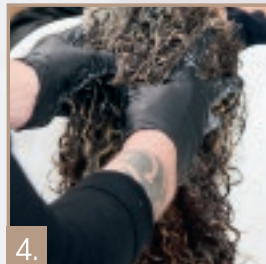
2. Start the application at the nape area, alternating weaves and slices.

Continue the application technique with diagonal sections at the contours up to the top panel.



3.

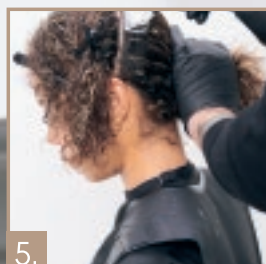
3. Leave in for up to 45 minutes (check development at regular intervals), remove the foils and rinse.



4.

REMOVAL:

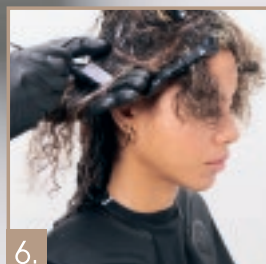
4. Wash with BLONDME Keratin Restore Bonding Shampoo and apply BLONDME Keratin Restore Bonding Mask for up to 5 minutes to rebalance the hair after the lightening process.



5.

TONER APPLICATION:

5. **ROOTS (COLOUR 1):** To create a blurred roots effect, start the toner application at the roots using BLONDME Deep Toning shades Milk Chocolate + Brown Mahogany (3:1) with BLONDME Premium Developer 2%/7 Vol. Developer. Mixing ratio: 1:1



6.

6. MID-LENGTHS & ENDS (COLOUR 2):

Apply BLONDME Blonde Toning Ice-Irisé with BLONDME Premium Developer 2%/7 Vol. Developer onto mid-lengths and ends for a perfect neutralization. Ensure that Colour 1 and Colour 2 are well blended. Mixing ratio: 1:1. Leave to develop for up to 20 minutes.



7.

FINAL CARE SERVICE

7. Rinse. Do not shampoo after toning! Apply BLONDME Keratin Restore Bonding Mask and leave for up to 5 minutes.

Use BLONDME Blonde Toning to ensure superior blonde results - for perfectly balanced neutralization & sophisticated tone enhancement!



LOOK CREATED BY JACK HOWARD

IG @JACKHOWARDCOLOR

LEADING BALAYAGE EDUCATOR

BLONDME Global Ambassador
• Color World Commercial Genius 2019
• BHBA Social Stylist 2019