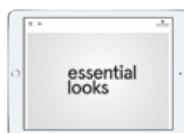
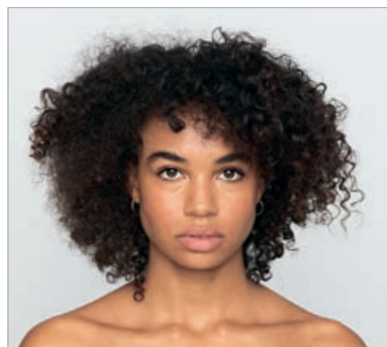


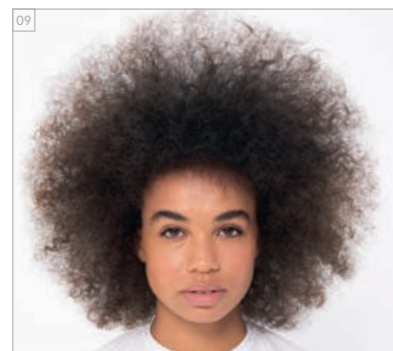
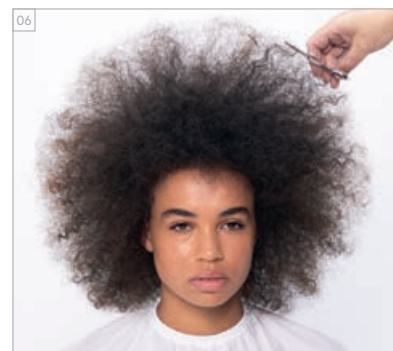
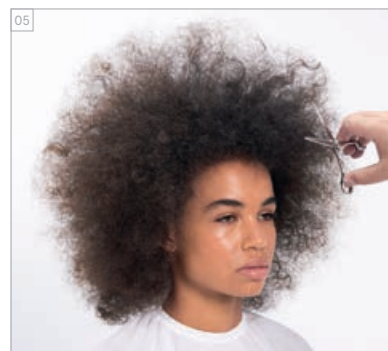
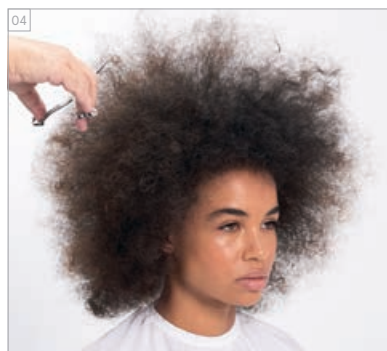
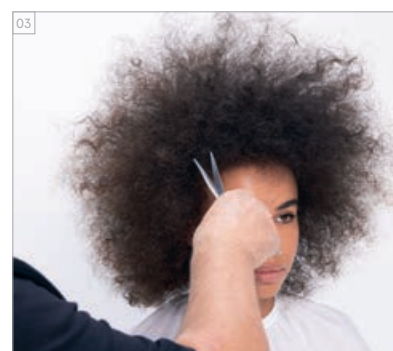
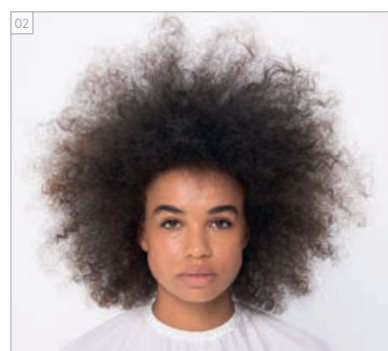
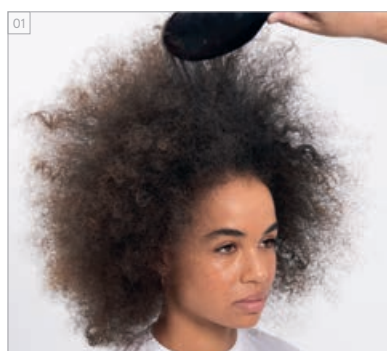
# ARTFUL FEELING SALON

ANTES // DEPUÉS  
ANTES // DEPOIS



Para obtener más información e inspiración, echa un vistazo al informe de tendencias #ArtfulFeeling: [www.essentiallooks.com/2021-1/trend3](http://www.essentiallooks.com/2021-1/trend3)  
Para mais informações e para obteres inspiração, consulta o nosso relatório de Tendência #ArtfulFeeling: [www.essentiallooks.com/2021-1/trend3](http://www.essentiallooks.com/2021-1/trend3)

CORTE PASO A PASO  
PASSO A PASSO - CORTE



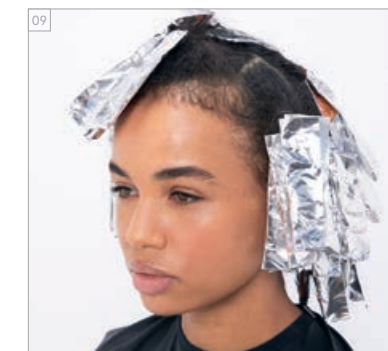
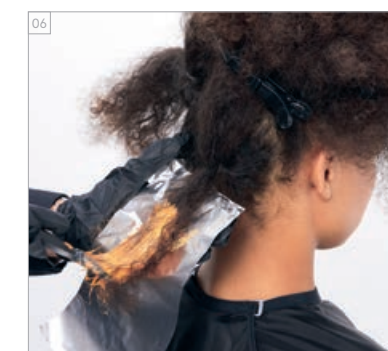
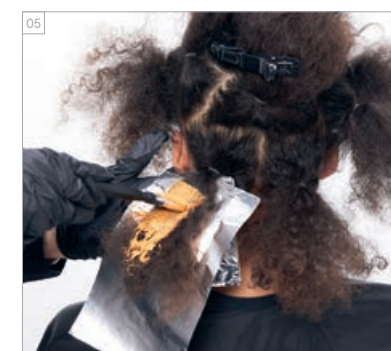
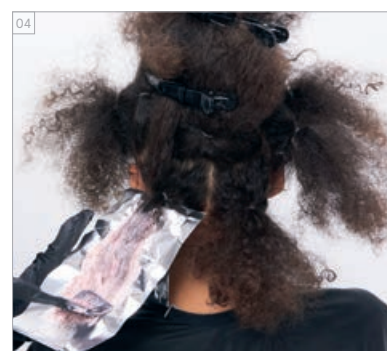
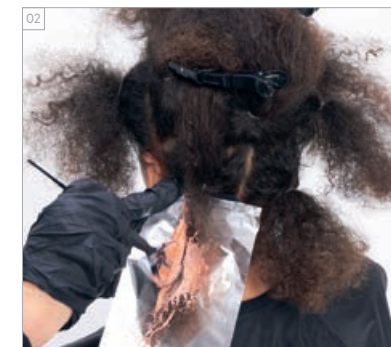
PRODUCTOS EMPLEADOS  
PRODUTOS USADOS



## #EssentialLooks

COLOUR TECHNIQUE  
#multitonefoiling  
by @edoardopaludo

COLOR PASO A PASO  
PASSO A PASSO - COLORAÇÃO



**COLORES UTILIZADOS**

**ALTERNANCIA DE MECHONES:**

- COLOR 1 - IGORA ROYAL 6-88 + IGORA ROYAL LOCIÓN ACTIVADORA 9%/30VOL. (1:1)
- COLOR 2 - IGORA ROYAL 8-77 + 0-89 + PASTELFIER (3:1) + IGORA ROYAL LOCIÓN ACTIVADORA 12%/40VOL. (1:1)
- COLOR 3 - IGORA ROYAL 8-84 + 9-98 + PASTELFIER (4:1:2) + IGORA ROYAL LOCIÓN ACTIVADORA 12%/40VOL. (1:1)

**TRATAMIENTO APLICADO**

- CHAMPÚ MICELAR SIN SULFATOS BC pH 4.5 COLOR FREEZE
- ACONDICIONADOR BC pH 4.5 COLOR FREEZE
- SÉRUM DE BRILLO CON FILTRO UV BC UV FILTER
- COLOR FREEZE LIQUID SHINE

**ESTILO DE ACABADO UTILIZADO**

- OSIS+ CURL HONEY
- OSIS+ FREEZE
- OSIS+ KEEP IT LIGHT

**CORES USADAS**

**MECHAS ALTERNADAS:**

- COR 1 - IGORA ROYAL 6-88 + IGORA ROYAL LOÇÃO ATIVADORA 9%/30VOL. (1:1)
- COR 2 - IGORA ROYAL 8-77 + 0-89 + PASTELFIER (3:1) + IGORA ROYAL LOÇÃO ATIVADORA 12%/40VOL. (1:1)
- COR 3 - IGORA ROYAL 8-84 + 9-98 + PASTELFIER (4:1:2) + IGORA ROYAL LOÇÃO ATIVADORA 12%/40VOL. (1:1)

**CUIDADO USADO**

- CHAMPÔ MICELAR SEM SULFATOS BC pH 4.5 COLOR FREEZE
- CONDICIONADOR BC pH 4.5 COLOR FREEZE
- LIQUID SHINE BC UV FILTER COLOR FREEZE

**FINALIZAÇÃO USADA**

- OSIS+ CURL HONEY
- OSIS+ FREEZE
- OSIS+ KEEP IT LIGHT