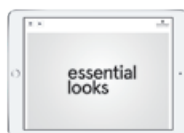
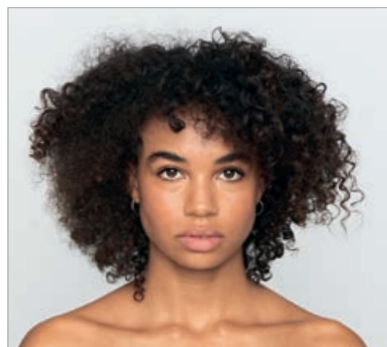


ARTFUL FEELING SALON

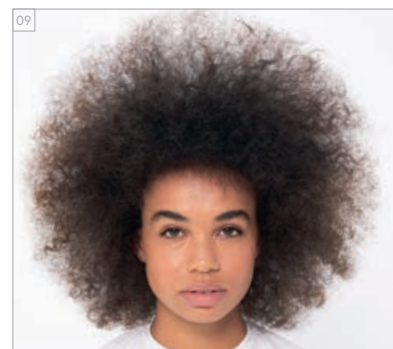
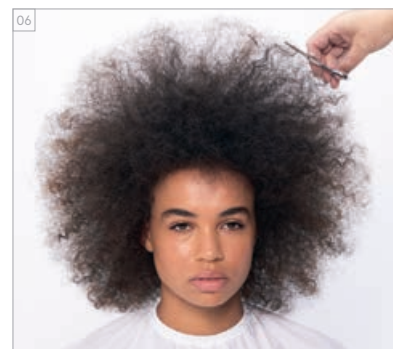
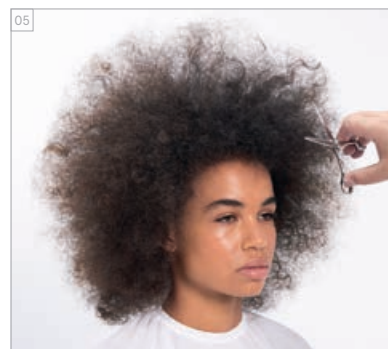
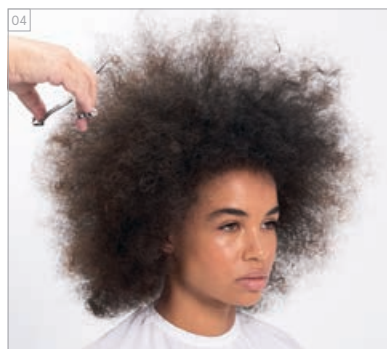
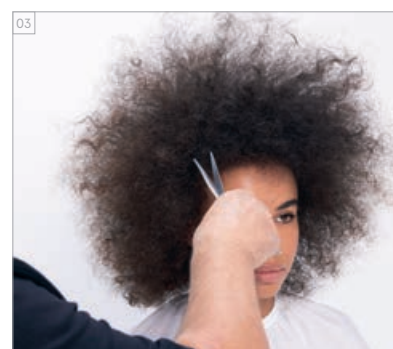
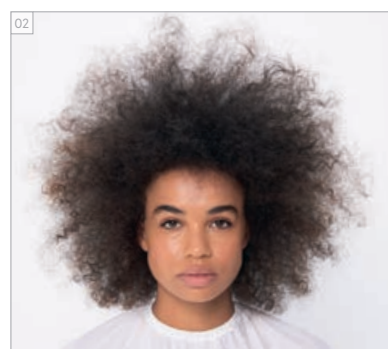
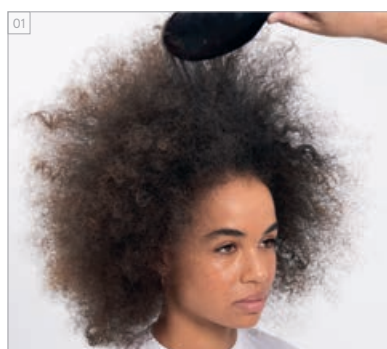
BEFORE // AFTER
VORHER // NACHHER



For more information and get inspired, have a look at the #ArtfulFeeling Trendreport: www.essentiallooks.com/2021-1/trend3

Für weitere Informationen und Inspiration sieh Dir unseren #ArtfulFeeling Trendreport an: www.essentiallooks.com/2021-1/trend3

CUT STEP BY STEPS
STEP BY STEP – SCHNITT



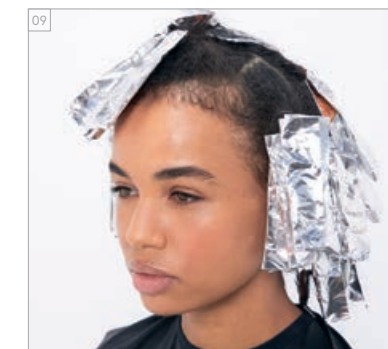
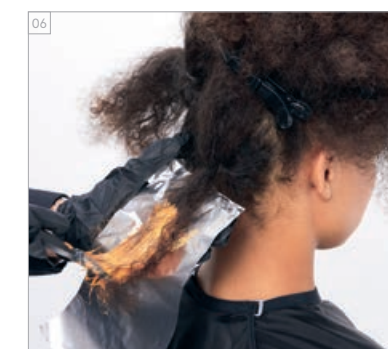
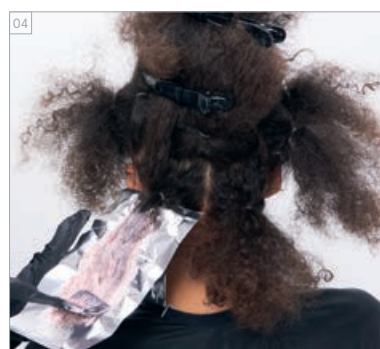
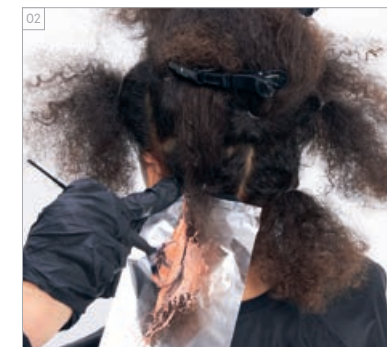
PRODUCTS USED
VERWENDETE
PRODUKTE



#EssentialLooks

COLOUR TECHNIQUE
#multitonefoiling
by @edoardopaludo

COLOUR STEP BY STEPS
STEP BY STEP – FARBE



COLOURS USED

ALTERNATING STRANDS:

- COLOUR 1 - IGORA ROYAL 6-88 + IGORA ROYAL OIL DEVELOPER 9%/30VOL. (1:1)
- COLOUR 2 - IGORA ROYAL 8-77 + 0-89 + PASTELFIER (3:1) + IGORA ROYAL OIL DEVELOPER 12%/40VOL. (1:1)
- COLOUR 3 - IGORA ROYAL 8-84 + 9-98 + PASTELFIER (4:1:2) + IGORA ROYAL OIL DEVELOPER 12%/40VOL. (1:1)

CARE USED

- BC pH 4.5 COLOR FREEZE SULFATE-FREE MICELLAR SHAMPOO
- BC pH 4.5 COLOR FREEZE CONDITIONER
- BC UV FILTER COLOR FREEZE LIQUID SHINE

STYLING USED

- OSIS+ CURL HONEY
- OSIS+ FREEZE
- OSIS+ KEEP IT LIGHT

VERWENDETE FARBEN

ABWECHSELNDE HAARSTRÄHNEN:

- FARBE 1 - IGORA ROYAL 6-88 + IGORA ROYAL OIL DEVELOPER 9% (1:1)
- FARBE 2 - IGORA ROYAL 8-77 + 0-89 + PASTELFIER (3:1) + IGORA ROYAL OIL DEVELOPER 12% (1:1)
- FARBE 3 - IGORA ROYAL 8-84 + 9-98 + PASTELFIER (4:1:2) + IGORA ROYAL OIL DEVELOPER 12% (1:1)

VERWENDETE PFLEGE

- BC pH 4.5 COLOR FREEZE SULFATE-FREE MICELLAR SHAMPOO
- BC pH 4.5 COLOR FREEZE CONDITIONER
- BC UV FILTER COLOR FREEZE LIQUID SHINE

VERWENDETE STYLINGPRODUKTE

- OSIS+ CURL HONEY
- OSIS+ FREEZE
- OSIS+ KEEP IT LIGHT