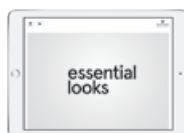
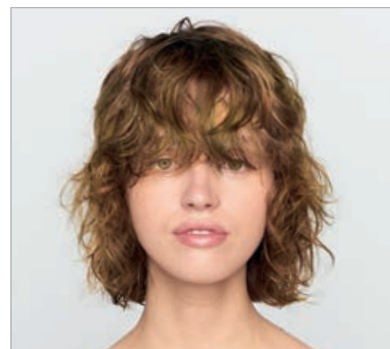


ALEX ARTFUL FEELING SALON

AVANT // APRÈS
BEFORE // AFTER



Pour plus d'informations et d'inspirations, jetez un œil au dossier #ArtfulFeeling: www.essentiallooks.com/2021-1/trend3

Guarda il nostro #ArtfulFeeling Trendreport: www.essentiallooks.com/2021-1/trend3



PRODUITS UTILISÉS
PRODUCTS USED

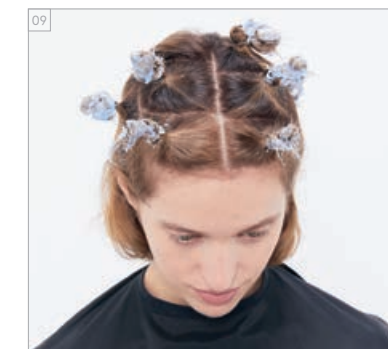
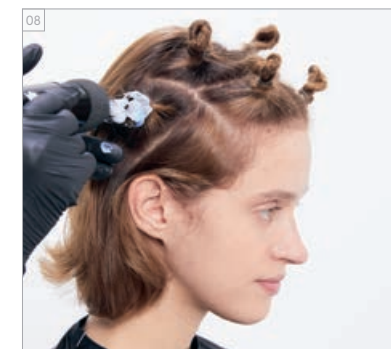
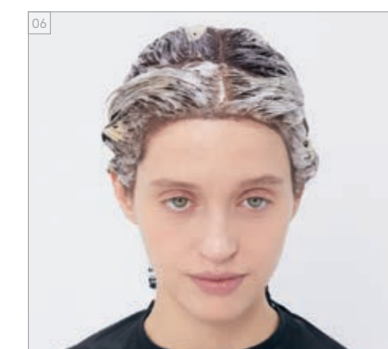
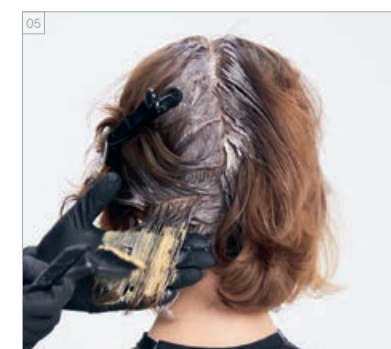
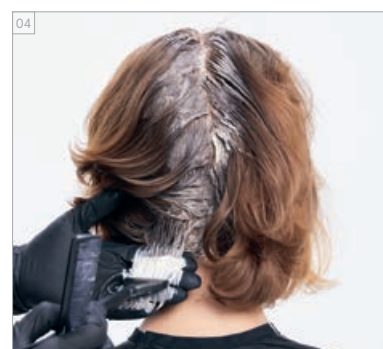
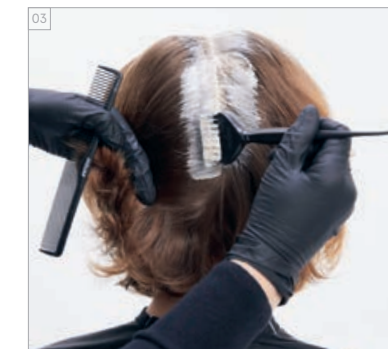
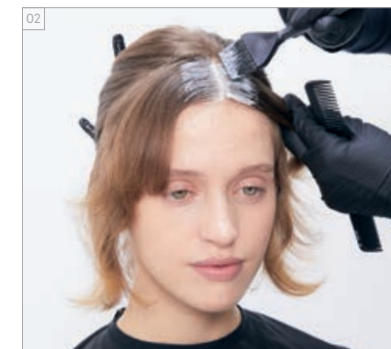
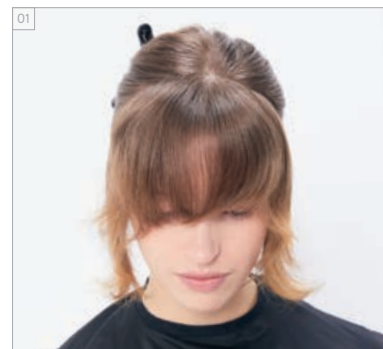


Photographies retouchées

#EssentialLooks

COLOUR TECHNIQUE
#colourtwist
by @shyandflo

COULEUR ÉTAPE PAR ÉTAPE
COLOUR STEP BY STEPS



CRÈMES DE COLORATION UTILISÉES

- COULEUR 1 – SUR LES RACINES DE LA ZONE FRONTALE :
IGORA ROYAL 8-21 + 8-0 (1:1)
+ RÉVÉLATEUR ENRICHÉ EN HUILE IGORA ROYAL 6%/20VOL. (1:1)
- COULEUR 2 – SUR LES RACINES DE LA ZONE ARRIÈRE :
IGORA ROYAL 5-4 + 4-46 (1:1)
+ RÉVÉLATEUR ENRICHÉ EN HUILE IGORA ROYAL 3%/10VOL. (1:1)
- COULEUR 3 – SUR LES LONGUEURS ET LES POINTES : IGORA ROYAL 6-46 (1:1)
+ RÉVÉLATEUR ENRICHÉ EN HUILE IGORA ROYAL 6%/20VOL. (1:1)
- COULEUR 4 – IGORA ROYAL 7-55 + 0-55 (6:1)
+ RÉVÉLATEUR ENRICHÉ EN HUILE IGORA ROYAL 9%/30VOL. (1:1)

DEUXIÈME ÉTAPE:

- COULEUR 5 – IGORA VARIO BLOND PLUS
+ RÉVÉLATEUR ENRICHÉ EN HUILE IGORA ROYAL 3%/10VOL. (1:2)

APRÈS LE RINÇAGE:

- COULEUR 6 – CHROMA ID JAUNE + BLEU (2:1)

SOINS UTILISÉS

- FIBRE CLINIX SHAMPOOING TRIBOND
- FIBRE CLINIX MASQUE TRIBOND POUR CHEVEUX FINS 25 g
- + FIBRE CLINIX BOOSTER D'HYDRATATION SQUALANE 5 g

COIFFANT UTILISÉS

- OSIS+ BOUNCY CURLS
- OSIS+ FREEZE PUMP

COLOURS USED

- COLOUR 1 – RADICI SEZIONE FRONTALE: IGORA ROYAL 8-21 + 8-0 (1:1)
+ IGORA ROYAL OIL DEVELOPER 6%/20VOL. (1:1)
- COLOUR 2 – RADICI SEZIONI POSTERIORI: IGORA ROYAL 5-4 + 4-46 (1:1)
+ IGORA ROYAL OIL DEVELOPER 3%/10VOL. (1:1)
- COLOUR 3 – MEDIE LUNGHEZZE E PUNTE ALTERNATE: IGORA ROYAL 6-46 (1:1)
+ IGORA ROYAL OIL DEVELOPER 6%/20VOL. (1:1)
- COLOUR 4 – IGORA ROYAL 7-55 + 0-55 (6:1)
+ IGORA ROYAL OIL DEVELOPER 9%/30VOL. (1:1)
- COLORAZIONE DELLE CIOCCHE ANNODATE:
COLOUR 5 – IGORA VARIO BLOND PLUS
+ IGORA ROYAL OIL DEVELOPER 3%/10VOL. (1:2)
- POST-RISCIACQUO:
COLOUR 6 – CHROMA ID YELLOW + BLUE (2:1)

CARE USED

- FIBRE CLINIX TRIBOND SHAMPOO
- FIBRE CLINIX TRIBOND TREATMENT FOR FINE HAIR 25 g
- + FIBRE CLINIX HYDRATE BOOSTER 5 g

STYLING USED

- OSIS+ BOUNCY CURLS
- OSIS+ FREEZE PUMP