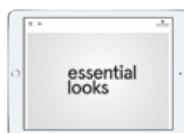


ARTFUL FEELING SALON

ANTES // DEPUÉS
ANTES // DEPOIS



Para obtener más información e inspiración, echa un vistazo al informe de tendencias #ArtfulFeeling: www.essentiallooks.com/2021-1/trend3
Para mais informações e para obteres inspiração, consulta o nosso relatório de Tendência #ArtfulFeeling: www.essentiallooks.com/2021-1/trend3



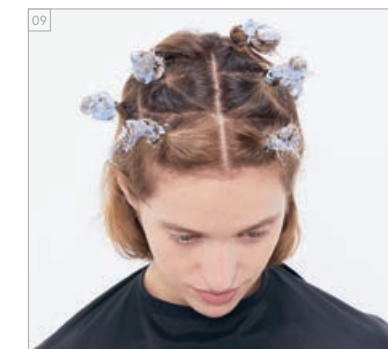
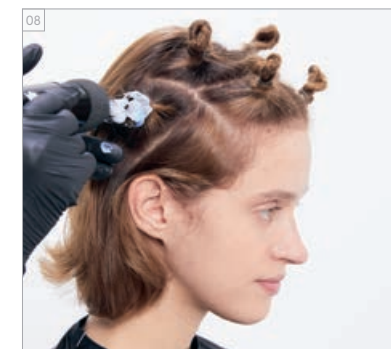
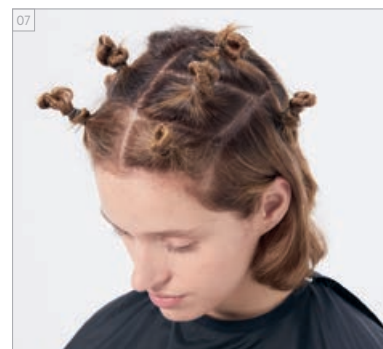
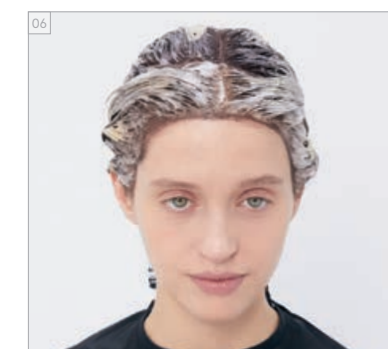
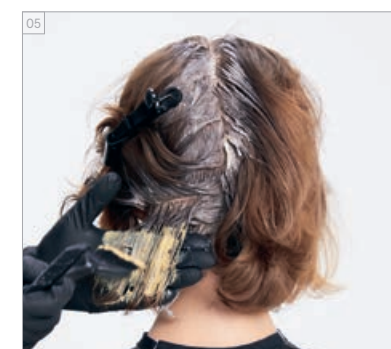
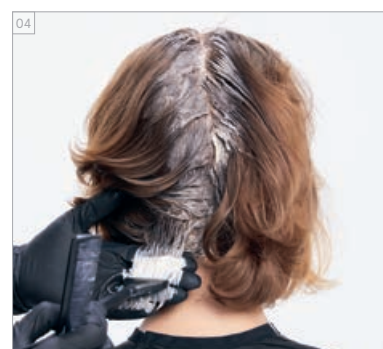
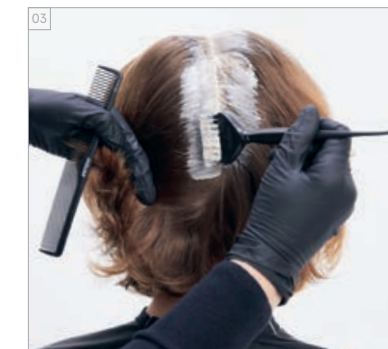
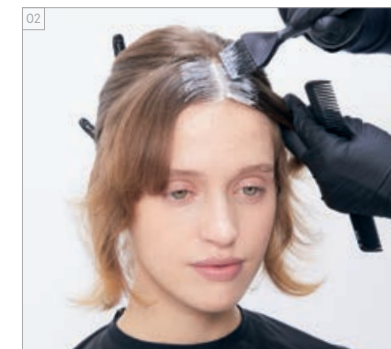
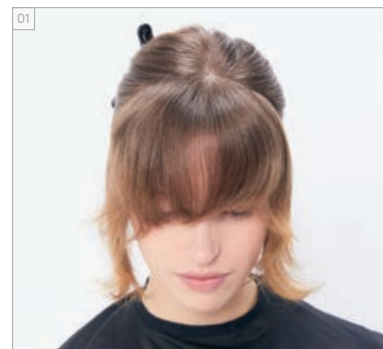
PRODUCTOS EMPLEADOS
PRODUTOS USADOS



#EssentialLooks

COLOUR TECHNIQUE
#colourtwist
by @shyandflo

COLOR PASO A PASO
PASSO A PASSO - COLORAÇÃO



COLORES UTILIZADOS

COLOR 1 - RAÍCES DE LA SECCIÓN FRONTAL: IGORA ROYAL 8-21 + 8-0 (1:1)
+ IGORA ROYAL LOCIÓN ACTIVADORA 6%/20VOL. (1:1)
COLOR 2 - RAÍCES DE LA SECCIÓN POSTERIOR: IGORA ROYAL 5-4 + 4-46 (1:1) +
IGORA ROYAL LOCIÓN ACTIVADORA 3%/10VOL. (1:1)
COLOR 3 - ALTERNANCIA MEDIOS Y PUNTAS: IGORA ROYAL 6-46 (1:1)
+ IGORA ROYAL LOCIÓN ACTIVADORA 6%/20VOL. (1:1)
COLOR 4 - IGORA ROYAL 7-55 + 0-55 (6:1)
+ IGORA ROYAL OIL LOCIÓN ACTIVADORA 9%/30VOL. (1:1)
COLORACIÓN DE NUDOS - SEGUNDA FASE
COLOR 5 - IGORA VARIO BLOND PLUS
+ IGORA ROYAL LOCIÓN ACTIVADORA 3%/10VOL. (1:2)
DEPUÉS DEL ACLARADO:
COLOR 6 - CHROMA ID AMARILLO + AZUL (2:1)

TRATAMIENTO APLICADO

CHAMPÚ FIBRE CLINIX TRIBOND
TRATAMIENTO PARA CABELLO FINO FIBRE CLINIX TRIBOND 25 g
+ POTENCIADOR HIDRATANTE FIBRE CLINIX HYDRATE BOOSTER 5 g

PRODUCTOS DE ACABADO UTILIZADOS

OSIS+ BOUNCY CURLS
OSIS+ FREEZE PUMP

CORES USADAS

COR 1 - SECÇÃO FRONTAL DAS RAÍZES: IGORA ROYAL 8-21 + 8-0 (1:1)
+ IGORA ROYAL LOÇÃO ATIVADORA 6%/20VOL. (1:1)
COR 2 - SECÇÃO POSTERIOR DAS RAÍZES: IGORA ROYAL 5-4 + 4-46 (1:1)
+ IGORA ROYAL LOÇÃO ATIVADORA 3%/10VOL. (1:1)
COR 3 - MEIOS E PONTAS ALTERNADOS: IGORA ROYAL 6-46 (1:1)
+ IGORA ROYAL LOÇÃO ATIVADORA 6%/20VOL. (1:1)
COR 4 - IGORA ROYAL 7-55 + 0-55 (6:1)
+ IGORA ROYAL LOÇÃO ATIVADORA 9%/30VOL. (1:1)
SEGUNDA FASE COLORAÇÃO DE NÓS:
COR 5 - IGORA VARIO BLOND PLUS
+ IGORA ROYAL LOÇÃO ATIVADORA 3%/10VOL. (1:2)
DEPOIS DE ENXAGUAR:
COR 6 - CHROMA ID AMARELO + AZUL (2:1)

CUIDADO USADO

CHAMPÔ FIBRE CLINIX TRIBOND
MÁSCARA FIBRE CLINIX TRIBOND PARA CABELOS FINOS 25 g
+ BOOSTER FIBRE CLINIX HYDRATE 5 g

FINALIZAÇÃO USADA

OSIS+ BOUNCY CURLS
OSIS+ FREEZE PUMP