

PRODUCT DESCRIPTION

The Loctite® EQ RB20 500D Dual Robot is identical to existing Loctite 500D robot, but with two independent working tables on Y-axis. The dual slides drastically increase throughput by allowing the operator to load and unload one part while the product is dispensed on another part allowing for zero down time.

PRODUCT FEATURE

- Two Y-axis increases throughput by eliminating down time associated with load/unload.
- Accommodates greater part and dispenser weight than a pair of 200D robots.
- Only requires 1 dispense system vs 2 for a pair of robots
- Only requires 1 open bottle of adhesive vs 2 open bottles with a pair of robots.
- Less bench space than two robots.
- Independent start buttons for each side.
- Independent dispense on/off purge control button allows adhesive to be purged from a dispense valve to prevent curing or aid in set-up.
- Needle tip calibration available.
- 100 programs, 4,000 point memory per program
- Teach Pendant program storage capabilities allows dispense program to be easily transferred from Robot to Robot.
- Low-cost robot has 3-axis control and 120 VAC or 220 VAC operation with a 24 VDC output signal.



Technical Data

Working Area X/Y/Z	500/500/100
Load Table/Z-Axis	10.0kg/5.0kg
Maximum Speed X&Y/Z (mm/sec)	600/300
Repeatability	+/-0.02mm/Axis
Resolution	0.02mm/Axis
Data Memory Capacity	4000 points/program 100 programs
Program System	USB 2.0 Memory Stick
Processor	32 Bit
Display	Teach Pendant LCD
Drive System/Stepping Motor	Micro stepping 3-Phase
Motion Control	PTP&CP
Linear/Circular Interpolation	3 Axes

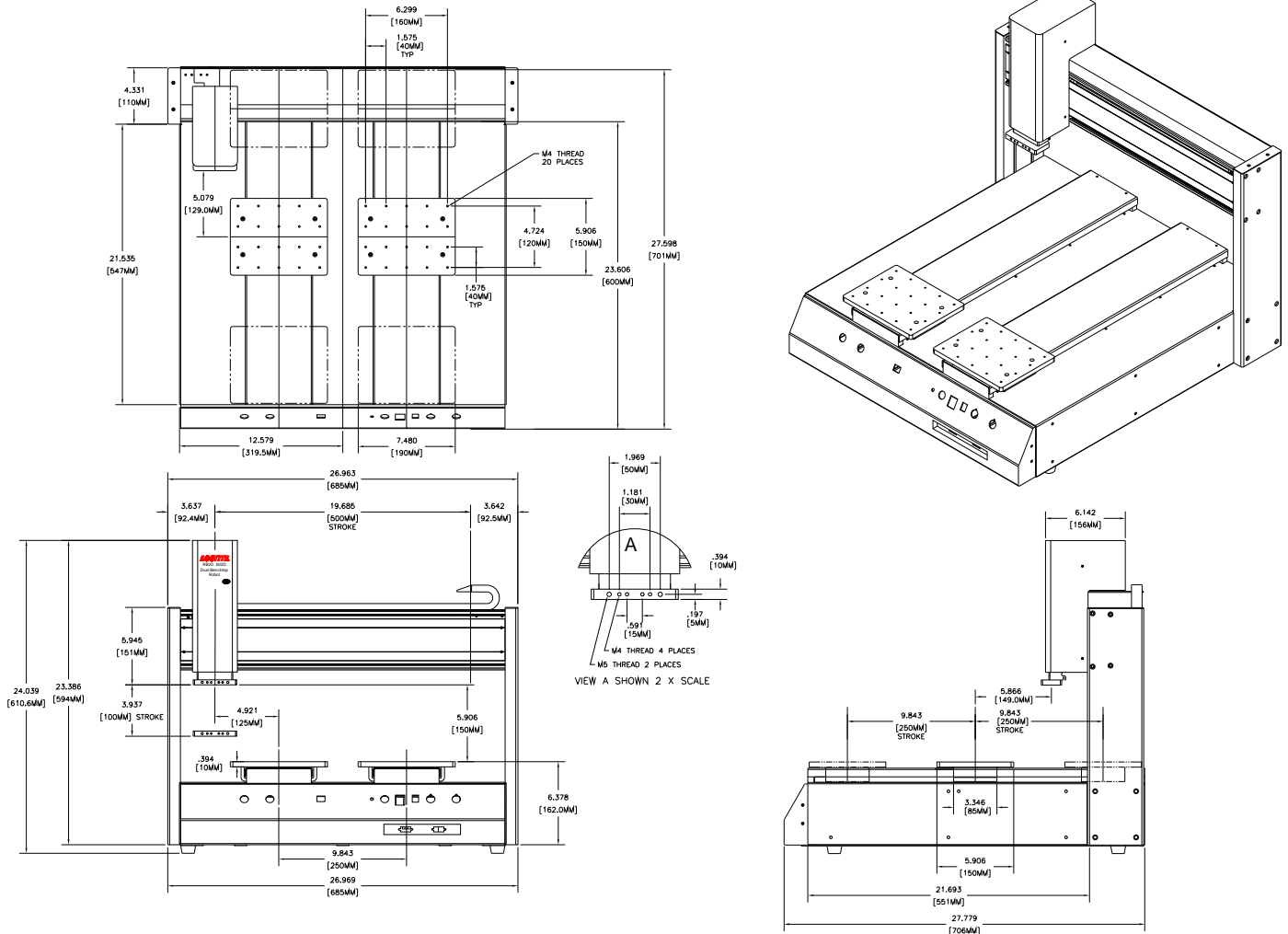
Teaching Method	Teach Pendant
I/O Signals	8 Input/* Output
External Interface	RS232
Power Supply	110~220 VAC 300W
Working Temperature	10 – 40 °C
Dimensions (WxDxH)(mm)	685x715x670
Weight	70kg





Product Description Sheet
EQ RB20 500D Dual Robot
Item No. 2112252

Dimensions



Note
The data contained herein are furnished for information only and are believed to be reliable. We cannot assume responsibility for the results obtained by others over whose methods we have no control. It is the user's responsibility to determine suitability for the user's purpose of any production methods mentioned herein and to adopt such precautions as may be advisable for the protection of property and of persons against any hazards that may be involved in the handling and use thereof. In light of the foregoing, Henkel Corporation specifically disclaims all warranties expressed or implied, including warranties of merchantability or fitness for a particular purpose, arising from sale or use of Henkel Corporation's products. Henkel Corporation specifically disclaims any liability for consequential or incidental damages of any kind, including lost profits. The discussion herein of various processes or compositions is not to be interpreted as representation that they are free from domination of patents owned by others or as a license under any Henkel Corporation patents that may cover such processes or compositions. We recommend that each prospective user test his proposed application before repetitive use, using this data as a guide. This product may be covered by one or more United States or foreign patents or patent applications.

Trademark usage
Except as otherwise noted, all trademarks in this document are trademarks of Henkel Corporation in the U.S. and elsewhere. ® denotes a trademark registered in the U.S. Patent and Trademark Office.

Document # 8906132, Date: 09/14/2016



Henkel Americas
1-800-LOCTITE
www.equipment.loctite.com

Henkel Europe
+49.89.320800.1800
www.henkel.com/industrial

Henkel Asia Pacific
+86.21.2891.8863
www.henkel.com/industrial