

LOCTITE

2040430 EQ HM22 Manual Dispenser

Operating Manual



Table of Contents

1	PLEASE OBSERVE THE FOLLOWING	3
1.1	EMPHASIZED SECTIONS.....	3
1.2	SAFETY	3
1.3	ITEMS SUPPLIED	3
2	DESCRIPTION	4
3	TECHNICAL DATA	4
4	INSTALLATION	5
5	OPERATION	6
5.1	THE PHASED STANDBY ENERGY SAVING FEATURE	6
5.2	TEMPERATURE ADJUSTMENT	6
6	APPLICATION HINTS	7
7	TROUBLESHOOTING	7
7.1	SNUBBER ADJUSTMENT	7
7.2	FEED MECHANISM ADJUSTMENT	8
7.3	SELF-DIAGNOSTIC INDICATOR FAULT CODES.....	8
8	CARE AND MAINTENANCE	9
9	ACCESSORIES AND SPARE PARTS	9
10	APPENDIX	10
11	EXPLODED DIAGRAM	10
12	PARTS LIST	11
13	WARRANTY	12

1 Please Observe The Following

1.1 Emphasized Sections

Warning!

Refers to safety regulations and requires safety measures that protect the operator or other persons from injury.

Caution!

Emphasizes what must be done or avoided so that the unit or other property is not damaged.

Notice:

Provides recommendations for better handling of the unit during operation or adjustment as well as for service activities.

1.2 Safety



Do not touch the nozzle or molten adhesive with bare skin as they are hot - the operating temperature of the Loctite® EQ HM22 Manual Dispenser is approximately 420°F (215°C). Protective gloves should always be worn. Careless handling can cause skin burns. If molten adhesive comes into contact with the skin immerse the affected area immediately in plenty of cold water. Seek medical advice if necessary.

In addition to the safety instructions herein, any statutory regulations, local fire insurance regulations, or other generally valid “regulations for accident prevention” must be complied with when using this tool.

- Never use the tool if it is damaged in any way.
- Do not use this tool in damp rooms, outdoors while it is raining, or where there is high humidity.
- Do not use this tool in the vicinity of any heat-sensitive materials, or any flammable materials, liquids, or gases.
- Only use extension cables that meet the specification shown in “Technical data”.
- Never pull on the tool’s connecting cable.

1.3 Items supplied

EQ HM22 Manual Dispenser

Plastic Stand

Manual

Plug In Temperature Modules: 320F / 160C, 383F / 195C, 420F / 215C

2 Description

The Loctite® EQ HM22 Manual Dispenser contains a powerful 400W stainless steel cartridge heater which, in conjunction with its adjustable solid-state electronic controller, provides both a fast 5-minute warm-up, and accuracy in temperature control to within +/- 10°F (5°C) of the set temperature. Temperature adjustment is achieved by changing the plug-in module – the operator simply chooses the most appropriate module for the adhesive formulation to be used.

The advanced electronics in the EQ HM22 Manual Dispenser's control circuitry detects when an operator pulls the trigger frequently, and boosts the power to the heater to respond to this increased demand for adhesive extrusion. The circuitry also detects extended periods of non-use and, if the tool is left unused for 30 minutes or more, will progressively reduce its temperature. This improves the tool's reliability and saves energy. After a period of 2 hours' non-use the tool will shut down completely (the indicator will blink every 3-4s to indicate that power is still connected). At any time during its phased-standby, energy-saving mode, simply pulling the trigger will reset the control, and the tool will begin to heat up to its normal operating temperature.

Designed to comply with world wide safety standards, the Loctite® EQ HM22 Manual Dispenser also features a totally enclosed heater housing, and is fitted with thermal fuse protection.

3 Technical Data

Dimensions (L x H x W):	approx. 12 1/4" x 9 5/8" x 2 11/16" (approx. 312 x 245 x 70 mm)
Total weight:	approx. 2.5 lbs. (1.15Kg)
Connection cable with main plug:	10 ft (3 m) long
Operating voltage:	110-120 VAC 50/60Hz
Power consumption:	400W
Heating up time:	5 - 7 minutes
Operating temperature:	approx. 420°F (215°C) (depends on Plug-in Module used)
Diameter of adhesive inlet:	1 11/16" (43 mm)
Extension cable:	max. 65ft (20 m) long
Wire cross section:	at least 16 awg (1.5 mm ²)

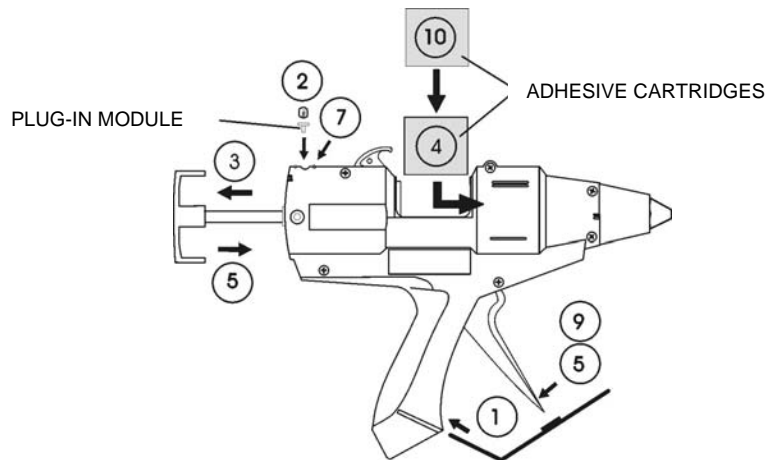
4 Installation



Before using the tool for the first time check it carefully for signs of external damage. If any shipping damage is found DO NOT USE THE TOOL - return it to your supplier immediately.

Steps 1 – 5 should be followed before connection to the main power supply:

1. Assemble the enclosed stand into the grooves at the base of the handle.
2. Check that the Plug-In Module is the appropriate one for the adhesive to be used (refer to the Spares and Accessory lists at the end of this manual).
3. Pull handle back fully.
4. Drop adhesive cartridge into the breach of the tool and push fully forward.
5. Advance handle/plunger to rear of the adhesive cartridge by operating trigger.



6. Connect tool to main power supply.
7. The green indicator light will begin to flash, indicating that power is connected.
8. Allow tool to warm up for 5 minutes. Do not attempt to operate the tool until this time has elapsed. (As the tool begins to warm up, the tool will carry out a limited self-diagnostic check, and will then signal its approach to the correct temperature by changing the duration of the indicator flash; when the tool is 'at temperature' the indicator will remain on.)
9. Operate trigger to push the adhesive cartridge forward to the reloading point.
10. Pull handle back fully and load a second adhesive cartridge. Operate trigger to advance handle/plunger.



With a new tool it will be necessary to operate the trigger several times before adhesive can be extruded; air trapped in the heater housing needs to be evacuated.

5 Operation

Normal use:

- Assemble the stand and place the tool in an upright position on a flat surface.
- Plug the tool into the power supply socket, and switch on the power.
- Wait 5 minutes for the tool to reach its normal operating temperature.
- Squeeze the trigger to advance the handle/plunger and extrude molten adhesive through the nozzle.
- To stop extruding adhesive simply release the trigger.



During use, the plunger will advance through the breach area of the barrel as the trigger is pulled. A point will be reached where the plunger no longer advances, but just moves back and forth. When this occurs the tool needs reloading with another adhesive cartridge.

- Pull the handle back fully.
- Insert a new adhesive cartridge.
- Operate the tool normally.

5.1 The Phased Standby Energy Saving Feature

With a tool as powerful as the Loctite® EQ HM22 Manual Dispenser there would be a risk of adhesive ‘meltdown’ if it were left unused for too long at its normal operating temperature. To avoid this, a special, phased standby function is built into the temperature controller, which will begin to progressively lower the temperature of the tool automatically after a period of approx. 30 minutes inactivity. Depending on the value of the Plug-In Temperature Module being used, the temperature of the tool will be reduced in a number of steps. After approx. 2 hours’ inactivity, the tool will enter its shut-down mode; power will no longer be applied to the heaters, allowing the tool to eventually cool down to ambient temperature.

When the trigger is pulled to use the tool again, the tool will begin to heat up to its normal operating temperature. The adhesive may appear very viscous at this point (depending on how long the tool had remained unused), but will quickly thin as the temperature returns to normal. Whilst operating in its phased standby or shut-down modes the tool’s indicator will have been flashing at different frequencies, signalling at what stage it was in – the slower the frequency, the longer the tool has been unused (and therefore the longer the tool will take to recover to its normal temperature).

When the tool is used for normal high output applications it is unlikely that the phased standby energy saving feature will operate.

5.2 Temperature adjustment

Temperature adjustment of the tool is achieved using a range of electronic Plug-In Modules with pre-set values. Simply select the required value (check that the Plug-In Module is the appropriate one for the adhesive to be used, referring to the Spares and Accessory lists at the end of this manual) and insert the module into the socket on top of the tool.

6 Application Hints

As with all adhesives, performance depends on conditions of use. Suggestions or recommendations contained herein are for guidance only, since actual conditions of use are outside the supplier's control.

- Ensure that the surfaces to be bonded are dry, free from dust, grease, and loose particles.
- Apply adhesive to one surface only. Bring the two surfaces together immediately, quickly making any further adjustments. Hold the joint for 20 - 30 seconds to complete the bond.
- When gluing dissimilar materials, apply the adhesive to the least heat conductive of the two.
- On materials that are cold to the touch, a better bond can be made by warming them before applying adhesive.
- Surplus adhesive can be trimmed using a sharp knife once it has cooled. Should molten adhesive drip onto a smooth or polished surface, allow it to cool completely before removal.
- Spots or blobs of adhesive are recommended for work pieces having a large surface area, or which are particularly long.
- Applying the adhesive in wavy lines is recommended for gluing textiles or similar materials.
- Foam materials, like polystyrene, can be easily bonded to other surfaces. However the adhesive must be applied to the other surfaces, not to the foam.
- Use only genuine Loctite® Hot Melt adhesives to ensure reliable performance. Loctite® Hot Melt adhesives are non-toxic and non-flammable.

7 Troubleshooting



Before proceeding with any repair or maintenance operation disconnect the tool from the main electricity supply.

If the adhesive cartridge does not advance when the trigger is pulled, check that the tool is plugged into the main supply, switched on, and has had sufficient time to warm up. Otherwise carry out the 'Snubber Adjustment' as follows:

7.1 Snubber Adjustment



THIS IS FACTORY-SET BUT MAY REQUIRE MINOR ADJUSTMENT AFTER AN INITIAL BEDDING-IN PERIOD


The snubber is a spring-loaded friction pad, which rubs on the side of the feed bar, preventing its backward movement when the trigger is released. With the snubber correctly adjusted, the plunger should remain stationary when the trigger is released. If there is a backward movement, more snubber pressure is required. To increase pressure turn the thumbscrew clockwise. Turn a quarter-turn each time and test. SEE DIAGRAM ON NEXT PAGE.

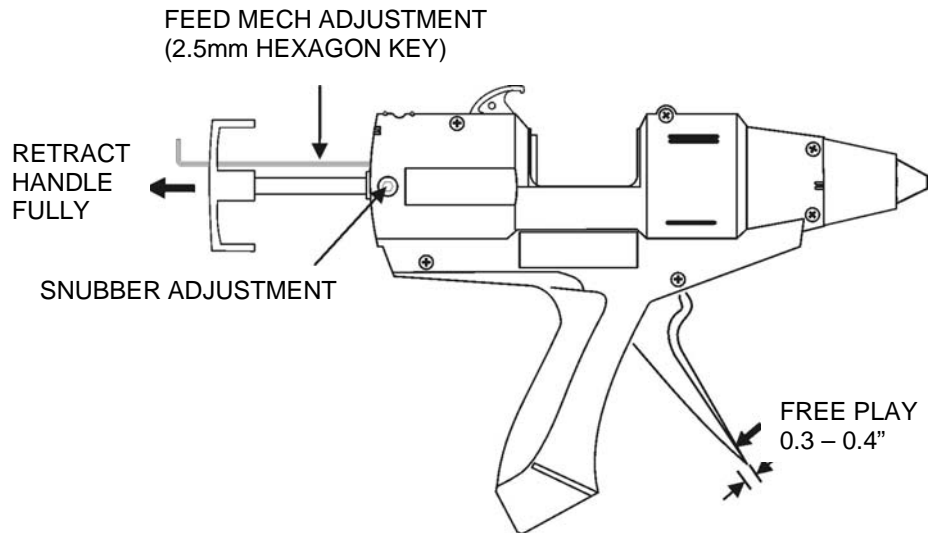
Do not over tighten, as this will make plunger retraction difficult and cause premature wear on the snubber pad.

7.2 Feed mechanism adjustment

THIS IS FACTORY SET AND SHOULD NOT REQUIRE ADJUSTMENT UNTIL THE TOOL HAS BEEN IN USE FOR SOME TIME.

This adjustment compensates for any wear or slackness in the trigger movement. Typically free play at the trigger tip should be 0.3 – 0.4" (8 - 10mm).

 To re-set, insert A 2.5 mm hexagon key through the upper hole in feed bar handle and turn clockwise to decrease free play. SEE DIAGRAM BELOW.



If feed mechanism adjustment is set too tight, plunger withdrawal will be very difficult.

7.3 Self-diagnostic Indicator Fault Codes

Two flashes, then off for 3 seconds

No Plug-In Temperature Module detected (e.g. not plugged in, or open-circuit)

Three flashes, then off for 3 seconds

Plug-In Temperature Module detected, but its value is not recognised (i.e. invalid)

Four flashes, then off for 3 seconds

Control system fault – contact manufacturer (see below)

FOR ANY REPAIRS OR ADJUSTMENTS – OTHER THAN THOSE DETAILED IN THIS MANUAL – PLEASE CONTACT 1-800-LOCTITE (562-8483).

8 Care and Maintenance

- When in use, do not lay the tool on its side - always place upright using the stand provided.
- Do not use excessive force on the trigger. Ensure that the tool has fully warmed up before use.
- Keep the nozzle clean to prevent adhesive build-up. This is easily done by wiping the nozzle with clean paper or cloth while the nozzle is still warm.



Replace the nozzle if worn or damaged. **Only replace the nozzle while the tool is still warm. Disconnect the tool from the power supply before proceeding, and always use protective gloves.**

Unscrew the nozzle from the tool using either a 1/2" (13 mm) spanner, or the spanner-feature moulded into the dispenser stand. Fit the replacement nozzle, ensuring that it is securely tightened.

9 Accessories and Spare Parts

Spare Parts	Part #
Nozzle Body Adapter With Nozzle Assembly	2049853
Nozzle Check Adapter Only (included with 2049853)	2049855
Nozzle Shroud Kit, 5 Pack	766026
Standard Nozzle 1-Hole Kit, 5 Pack	2049852
Nozzle 2-Hole	478581
Nozzle 3-Hole	478582
Extension Nozzle 0.120" (3mm)	478583
Needle Extension Nozzle 0.050" (1.3mm)	416691
Spreader Extension Nozzle 0.250" (6mm)	478584
"L" Nozzle, overlap carton sealing	478585
Plug-in Temperature Module 130 C / 266 F	8904636
Plug-in Temperature Module 160 C / 320 F	8904637
Plug-in Temperature Module 180 C / 356 F	8904638
Plug-in Temperature Module 195 C / 383 F	8904639
Plug-in Temperature Module 205 C / 400 F	8904640
Plug-in Temperature Module 215 C / 420 F	8904641

10 Appendix

Available nozzles/accessories



2049852
1 Hole
Standard
5 pack

478581
2 Hole

478582
3 Hole

478583
Extension

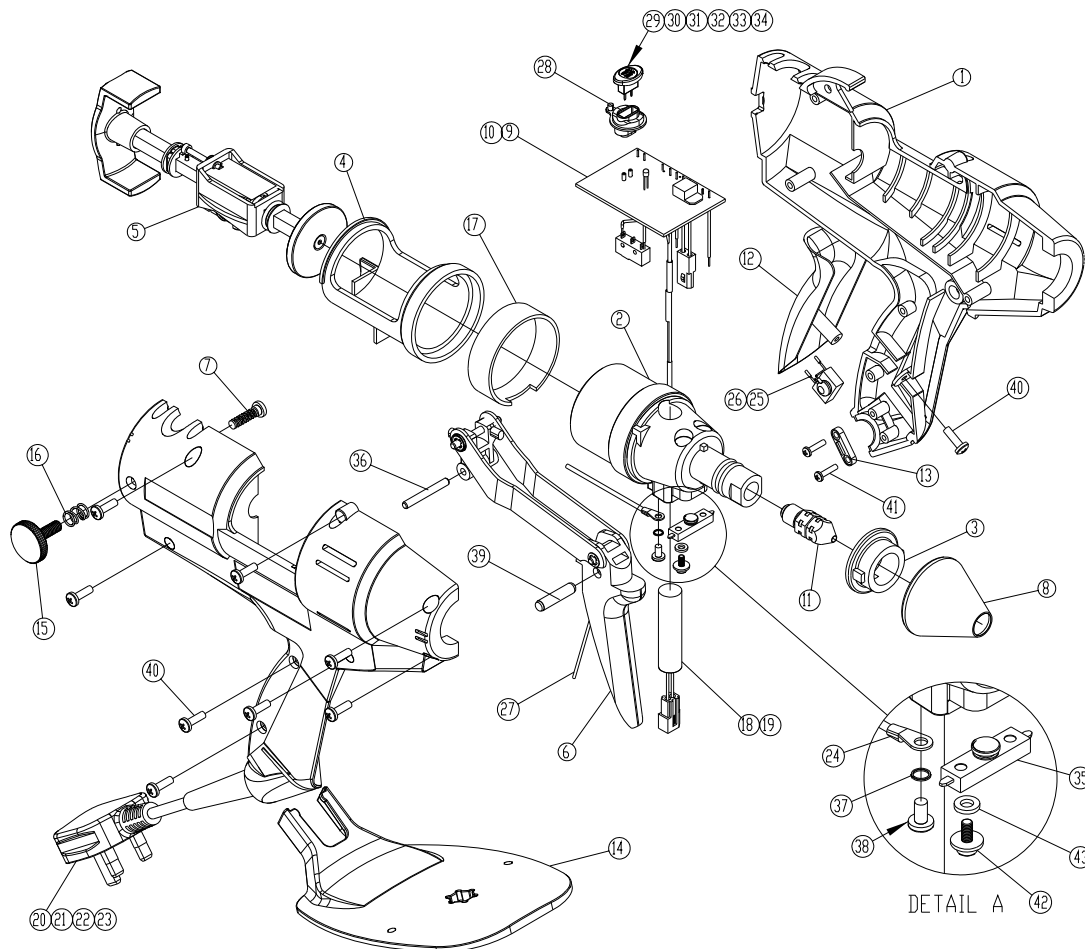
416691
Needle

478584
Spreader

478585
"L" Nozzle

2049855
Nozzle
Check
Adapter

11 Exploded Diagram



12 Parts List

Item	Qty	Description	Available Part No.
43	1	M3 Washer	
42	1	Double Washer Sems Screw M3 x 8mm	
41	2	Screw #4 x 1/2"	
40	9	Posi Pan Screw Plastite 4mm x 12mm	
39	1	Dowel Pin 6mm x 26mm	
38	1	Posi Pan Screw 4BA x 1/4"	
37	1	Spring Washer 4BA	
36	1	Dowel Pin 4mm x 32mm	
35	1	Thermal Fuse Assembly	
34	1	Plug In Temperature Module 215C/420F	8904641
33	1	Plug In Temperature Module 205C/400F	8904640
32	1	Plug In Temperature Module 180C/356F	8904638
31	1	Plug In Temperature Module 160C/320F	8904637
30	1	Plug In Temperature Module 130C/266F	8904636
29	1	Plug In Temperature Module 195C/383F	8904639
28	1	Temperature Module Receptacle	
27	1	Trigger Spring	
26	1	Capacitor / VDR Assembly 120V	
25	1	Capacitor / VDR Assembly 240V	
24	1	Ground Wire Assembly	
23	1	US Cord Set Assembly, 3M	
22	1	110V Cord Set Assembly, 3M	
21	1	Euro Cord Set Assembly, 3M	
20	1	UK Cord Set Assembly, 3M	
19	1	Heater Assembly 120V	
18	1	Heater Assembly 230V	
17	1	Barrel Support	
16	1	Compression Spring	
15	1	Thumb Screw	
14	1	Dispenser Stand	
13	1	Cord Clamp	
12	1	Handle Grip	
11	1	Complete Nozzle/Check Adapter Assembly Nozzle Only Check Adapter Only	2049853 2049852 (5 Pack) 2049855
10	1	Temperature Control Assembly 230V	
9	1	Temperature Control Assembly 120V	
8	1	Nozzle Shroud	766026 (5 Pack)
7	1	Snubber Assembly	
6	1	Feed Link / Trigger Assembly	
5	1	Feed Bar Mechanism Assembly	
4	1	Rear Barrel	
3	1	Heater Housing Spacer	
2	1	Heater Housing Assembly	
1	1	Handles, Pair	

13 Warranty

Henkel expressly warrants that all products referred to in this Instruction Manual under Loctite® EQ HM22 Manual Dispenser (hereafter called "Products") shall be free from defects in materials and workmanship. Liability for Henkel shall be limited, as its option, to replacing those Products which are shown to be defective either in materials or workmanship or to credit to the purchaser the amount of the purchase price thereof (plus freight and insurance charges paid therefor by the user). The purchaser's sole and exclusive remedy for breach of warranty shall be such replacement or credit.

A claim of defect in materials or workmanship in any Products shall be allowed only when it is submitted to Henkel in writing within one month after discovery of the defect or after the time the defect should have reasonably have been discovered and in any event, within twelve months after the delivery of the Products to the purchaser. No such claim shall be allowed in respect of Products which have been neglected or improperly stored, transported, handled, installed, connected, operated, used or maintained. In the event of unauthorized modification of the Products including; where products, parts or attachments for use in connection with the Products are available from Henkel, the use of products, parts or attachments which are not manufactured by Henkel, no claim shall be allowed.

No Products shall be returned to Henkel for any reason without prior written approval from Henkel. Products shall be returned freight prepaid, in accordance with instructions from Henkel.

NO WARRANTY IS EXTENDED TO ANY EQUIPMENT THAT HAS BEEN ALTERED, MISUSED, NEGLECTED, OR DAMAGED BY ACCIDENT, OR IF THE SYSTEM IS USED TO DISPENSE ANY LIQUID MATERIAL OTHER THAN HENKEL PRODUCTS.

EXCEPT FOR THE EXPRESS WARRANTY CONTAINED IN THIS SECTION, HENKEL MAKES NO WARRANTY OF ANY KIND WHATSOEVER, EXPRESS OR IMPLIED, WITH RESPECT TO THE PRODUCTS.

ALL WARRANTIES OR MERCHANTABILITY, FITNESS FOR A PARTICULAR PURPOSE, AND OTHER WARRANTIES OF WHATEVER KIND (INCLUDING AGAINST PATENT OR TRADEMARK INFRINGEMENT) ARE HEREBY DISCLAIMED BY HENKEL AND WAIVED BY THE PURCHASER.

THIS SECTION SETS FORTH EXCLUSIVELY ALL OF LIABILITY FOR HENKEL TO THE PURCHASER IN CONTRACT, IN TORT OR OTHERWISE IN THE EVENT OF DEFECTIVE PRODUCTS.

WITHOUT LIMITATION OF THE FOREGOING, TO THE FULLEST EXTENT POSSIBLE UNDER APPLICABLE LAWS, HENKEL EXPRESSLY DISCLAIMS ANY LIABILITY WHATSOEVER FOR ANY DAMAGES INCURRED DIRECTLY OR INDIRECTLY IN CONNECTION WITH THE SALE OF USE OF, OR OTHERWISE IN CONNECTION WITH, THE PRODUCTS, INCLUDING, WITHOUT LIMITATION, LOSS OF PROFITS AND SPECIAL, INDIRECT OR CONSEQUENTIAL DAMAGES, WHETHER CAUSED BY HENKEL NEGLIGENCE OR OTHERWISE.

Henkel Corporation

One Henkel Way
Rocky Hill, CT 06067-3910
USA

Henkel Capital, S.A. de C.V.

Calzada de la Viga s/n Fracc.
Los Laureles
Loc. Tulpetlac, C.P. 55090
Ecatepec de Morelos, MEXICO

Henkel Loctite Korea

8F, Mapo Tower, 418,
Mapo-dong, Mapo-gu,
Seoul, 121-734, KOREA

Henkel Canada Corporation

2515 Meadowpine Boulevard
Mississauga, Ontario L5N 6C3
Canada

Henkel Singapore Pte Ltd

401, Commonwealth Drive
#03-01/02 Haw Par Technocentre
SINGAPORE 149598

Henkel Japan Ltd.

27-7 Shin Isogo-cho, Isogo-ku
Yokohama, 235-0017
JAPAN

Henkel Corporation**Automotive/ Metals H.Q.**

32100 Stephenson Hwy,
Madison Heights 48071
USA

Henkel (China) Company Ltd.

No. 928 Zhang Heng Road,
Zhangjiang, Hi-Tech Park, Pudong,
Shanghai, China 201203

Henkel AG & Co. KGaA

Standort München
Gutenbergstraße 3
85748 Garching b. München
Deutschland

www.equipment.loctite.com

© and ™ designate trademarks of Henkel Corporation or its affiliates. ® = registered in the U.S. and elsewhere. ©
Henkel Corporation. All rights reserved. Data in this operation manual is subject to change without notice.
Manual P/N: 8904634, Date: 07/22/2015