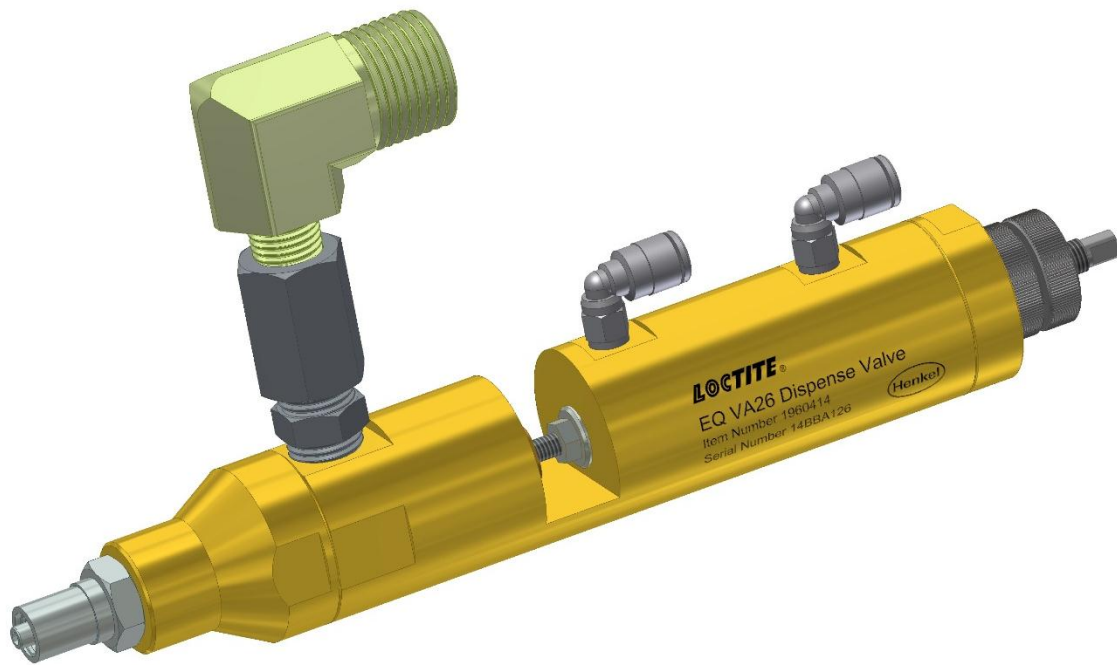




# 1960414 EQ VA26 Dispense Valve

## Operating Manual



# Table of Contents

1	Please Observe The Following.....	3
1.1	Emphasized Sections .....	3
1.2	For Your Safety.....	3
1.3	Unpacking and Inspection.....	4
1.4	Items supplied.....	4
1.5	Features .....	4
1.6	Usage .....	4
2	Technical Data .....	5
3	Dimensions .....	5
4	Installation.....	6
5	Operation .....	6
5.1	Connection.....	6
5.2	Operation .....	7
5.3	Shutdown .....	8
5.4	Returning to Operation .....	8
6	Troubleshooting .....	9
7	Accessories and Spare Parts .....	10
8	Warranty .....	11

---

# 1 Please Observe The Following

---

## 1.1 Emphasized Sections

### **Warning!**

Refers to safety regulations and requires safety measures that protect the operator or other persons from injury or danger to life.


### **Caution!**


Emphasizes what must be done or avoided so that the unit or other property is not damaged.

### **Notice:**


A notice gives recommendations for better handling of the unit during operation or adjustment as well as for service activities.

## 1.2 For Your Safety


 For safe and successful operation of the unit, read these instructions completely. If the instructions are not observed, the manufacturer can assume no responsibility.


 When working with pressurized air, wear protective glasses.

 Use only original equipment replacement parts.

 This valve operates under maximum air pressure input is 6 bars, do not exceed.

 This valve operates under maximum fluid pressure is 50 bars, do not exceed.

 Observe general safety regulations for the handling of chemicals such as Loctite® adhesives and sealants. Observe the manufacturer's instructions as stated in the Safety Data Sheet.

 While under warranty, the unit may be repaired only by an authorized Loctite® service representative.

### **1.3 Unpacking and Inspection**

Carefully unpack the Loctite® EQ VA26 Dispense Valve and examine the items contained in the carton. Inspect the unit for any damage that might have occurred in transit. If such damage has occurred, notify the carrier immediately. Claims for damage must be made by the consignee to the carrier and should be reported to the manufacturer.

### **1.4 Items supplied**

- 1.4.1 EQ VA26 Dispense Valve
- 1.4.2 Two meters each of clear and blue airline tubing
- 1.4.3 Operation Manual

### **1.5 Features**

- 1.5.1 Maximum working fluid pressure: 50 bars (725 psi)
- 1.5.2 Bubble free, no-drip dispensing
- 1.5.3 High resolution stroke adjustment

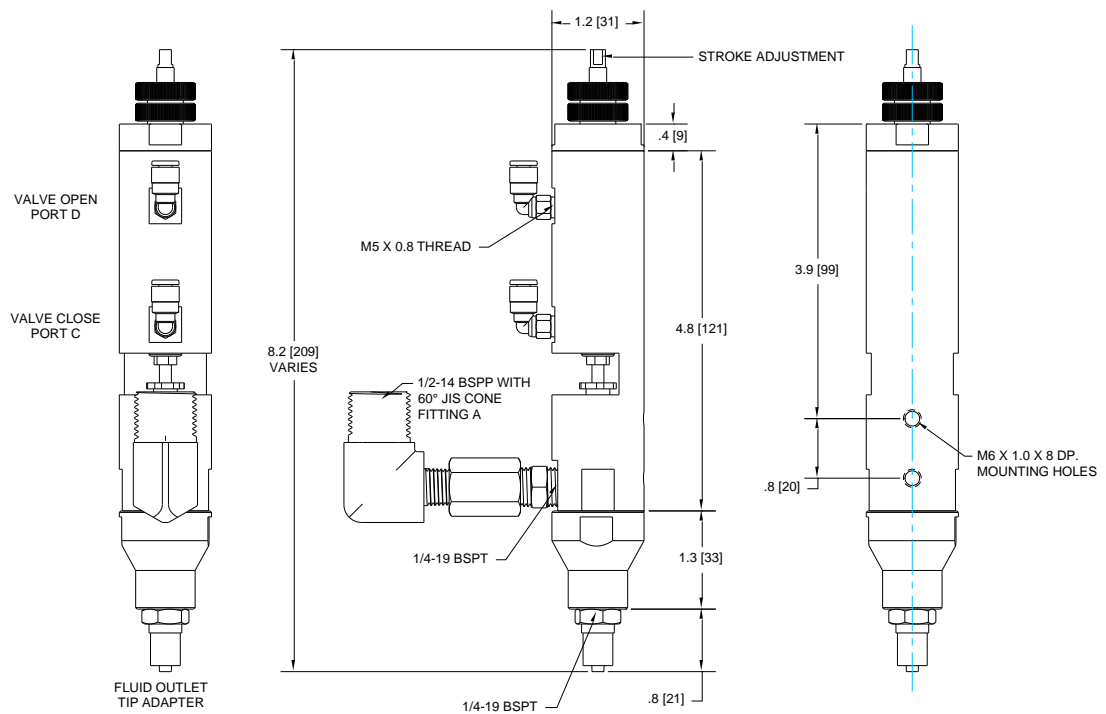
### **1.6 Usage**

The Loctite® EQ VA26 Dispense Valve is a double acting dispense valve that is used to dispense medium to high viscosity silicone, MS polymer and urethane products. It can operate at fluid pressures up to 50 bars and features inherent suck back that draws a small amount of product back at the end of each stroke.

## 2 Technical Data

Pneumatic Supply Quality	Max. 6.8 Bars (max. 100 psi) Filtered 10µm, oil free, non-condensing If the required quality is not achieved, install a Loctite® filter regulator 88649 (97120)
Size	8.3" length x 1.2" diameter (210 mm x 31 mm)
Free Flow Orifice	0.20" diameter (5 mm)
Inlet Thread	¼-19 BSPT Female
Product Fluid Pressure	Max. 50 bars (max. 725 psi)
Weight	0.54 kg

## 3 Dimensions



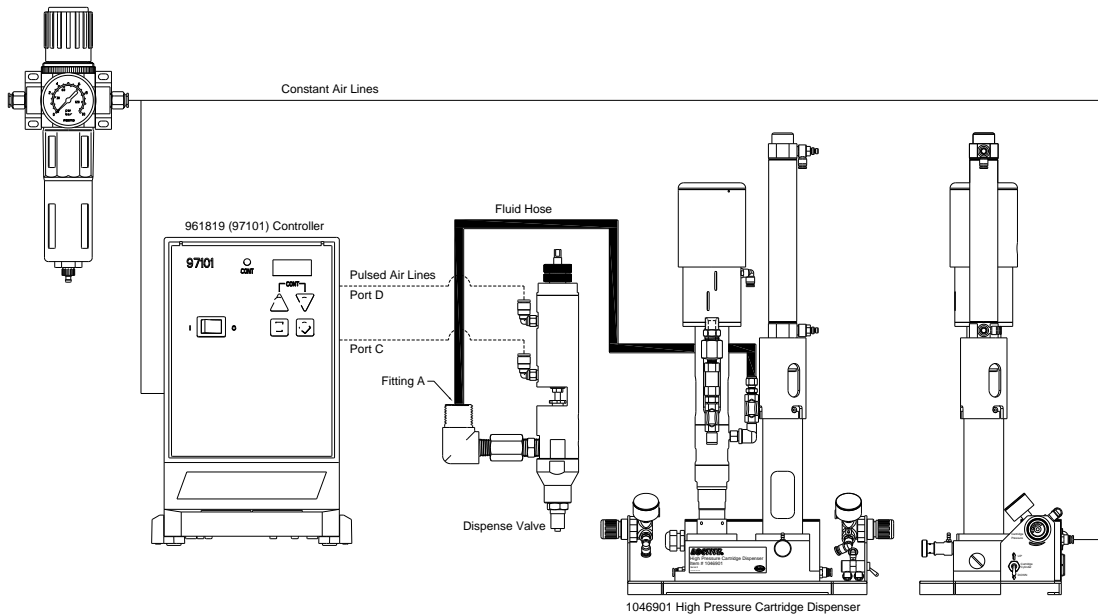
---

## 4 Installation

---

**!** Before using the equipment for the first time check it carefully for signs of external damage. If any shipping damage is found DO NOT USE THE EQUIPMENT – return it to your supplier immediately.

Plant air must be properly filtered and dry.  
Ref: 88649 (97120) Filter / Regulator



---

## 5 Operation

---

### 5.1 Connection

Connect the 4 mm O.D. airline to the air fitting “port C” and the other end of airline will be connected to the normally opened port of solenoid valve.

Connect the 4 mm O.D. airline to the air fitting “port D” and the other end of airline will be connected to the normally closed port of solenoid valve.

Connect the fluid hose to the fluid inlet “fitting A” and tighten.



Make sure the tube was cut at a right angled cut. Tube cutter is recommended.

## 5.2 Operation

With the Semi-Automatic Controller 88649 (97101) set up and connected to the valve, and the High Pressure Cartridge Dispenser 1046901 (HPCD) connected as previously shown, load the High Pressure Cartridge Dispenser per High Pressure Cartridge Dispenser Operating Manual instructions.

**CAUTION:** Always treat a pressurized reservoir with respect, and check air gauge to ensure pressure is at zero before opening.

After filling, check to be certain the system is sealed with no leaks.

### Before proceeding, check the following:

1. Be sure all the connections are tight.
2. Set the valve control air pressure at a minimum of 60 psi (4 Bars).
3. Actuate the valve long enough to fill the valve, start liquid flow and purge air from the dispensing tip. If a small tip is used, it may need to be removed from the valve during purging. Then fill the tip hub with fluid and install on the tip adapter so it is free of air.

### To open the valve:

1. Apply air pressure to OPEN air port (Port D) on the valve, and remove pressure from the CLOSE (Port C) air port on the valve.
2. Maintain air pressure on the OPEN (Port D) air port to keep the valve open.

### To close the valve:

1. Apply air pressure to CLOSE air port (Port C) on the valve, and remove pressure from the OPEN (Port D) air port on the valve.
2. Maintain air pressure on the CLOSE (Port C) air port to keep the valve open.

**To adjust the stroke:**

1. Rotate the stroke adjustment to change the length of the stroke. This will affect the product flow rate.
2. Rotating the stroke adjustment toward the stop nut will decrease the flow rate.
3. The unit ships pre-set to maximum flow.

**5.3 Shutdown**

1. To prevent the product from coming in contact with air, put an end-cap on the nozzle or keep the nozzle in grease.

**5.4 Returning to Operation**

1. Remove the end-cap from the nozzle.
2. If needed, purge the product feed line and dispensing valve.

**Returning to Operation After Longer Periods of Non-use.**

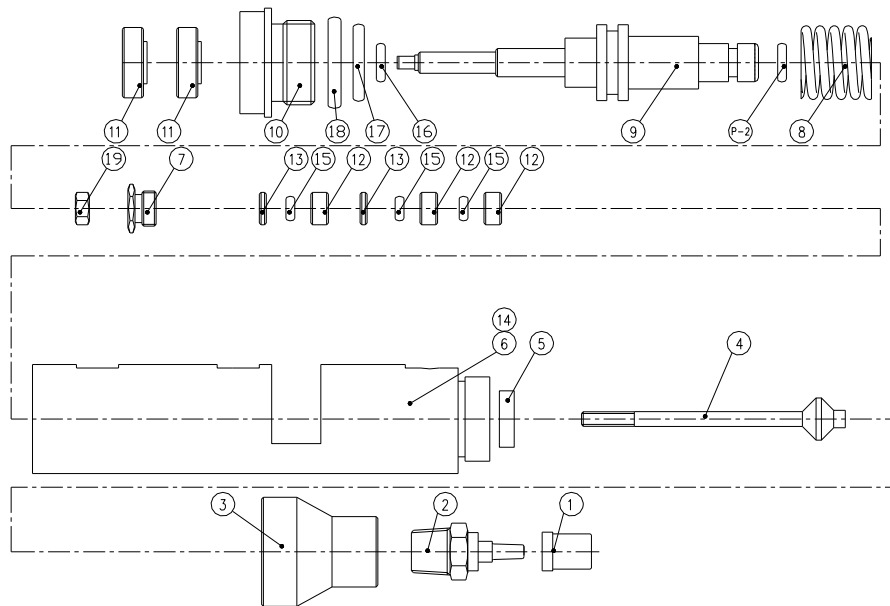
1. Remove the Luer-Lock tip cap.
2. Purge the product feed line and dispensing valve.



## 6 Troubleshooting

<b>Problem</b>	<b>Possible Cause</b>	<b>Correction</b>
No product or too little product	Product feed line not correctly connected	Correctly connect the product feed line
	Pneumatic hose not correctly connected	Correctly connect the pneumatic hose
	Controller incorrectly adjusted	Check the controller (see operating instructions for the controller)
	HPCD not switched on or pressure is too low	Check the HPCD (see operating instructions for the HPCD)
	Valve operating pressure is too low	Increase air pressure to 60psi (4 bar) minimum
	The dispensing tip is clogged	Replace the tip
	Curing in the product feed line and/or in the dispensing valve	Replace the product feed line and clean dispensing valve head
Air bubble in product	Air in the dispensing valve/product feed line	Purge the product feed line, dispensing valve and dispensing tip
Inconsistent deposits	The air pressure controlling the valve and/or HPCD is fluctuating	Check to be make sure the air pressures are constant
	The open time of the valve timer must be constant	Check to be sure the valve controller is providing a consistent output

## 7 Accessories and Spare Parts



Number	Loctite® Kit Number	Description
1 & 2		Fluid Outlet Tip Adapter
3		Lower Cap
4	1961249	Suck Back Pin, Outlet Seal Kit
5	1961249	Outlet Seal, PTFE, Outlet Seal Kit
6		Cylinder Housing
7		Seal Cap
8		Compression Spring
9		Valve Piston
10		Valve End Cap
11		Stop Nuts
12	1961250	O-Ring Housing (3), PTFE, Shaft Seal Kit
13	1961250	O-Ring Seal Plate (2), PTFE, Shaft Seal Kit
14		Cylinder Housing Artwork
15	1961250	O-Ring (3), Viton, Shaft Seal Kit
16	1251162	O-Ring (2), Viton, Actuator Seal Kit

17	1251162	O-Ring, Viton, Actuator Seal Kit
18	1251162	O-Ring, Viton, Actuator Seal Kit
19		M4 Hex Nut
20	1553588	Fluid Inlet Fitting (Not Shown)
21		Hex Nipple ¼-19 BSPT, (Not Shown)
22		Female Hex Coupling ¼-19 BSPT, (Not Shown)
23		Male Elbow 4mm Tube x M5 x 0.8 Thread, (Not Shown)
24	1070269	Robot Valve Mounting Bracket Kit, (Not Shown)
25	1241821	Fluid Hose, 1 Meter, (Not Shown)
26	1241780	Fluid Hose, 2 Meters, (Not Shown)

---

## 8 Warranty

---

Henkel expressly warrants that all products referred to in this Instruction Manual for 1XXX EQ VA26 Dispense Valve (hereafter called "Products") shall be free from defects in materials and workmanship. Liability for Henkel shall be limited, as its option, to replacing those Products which are shown to be defective in either materials or workmanship or to credit the purchaser the amount of the purchase price thereof (plus freight and insurance charges paid therefor by the user). The purchaser's sole and exclusive remedy for breach of warranty shall be such replacement or credit.

A claim of defect in materials or workmanship in any Products shall be allowed only when it is submitted in writing within one month after discovery of the defect or after the time the defect should reasonably have been discovered and in any event, within (12) months after the delivery of the Products to the purchaser. This warranty does not apply to perishable items, such as product fittings, seals, o-rings, etc. No such claim shall be allowed in respect of products which have been neglected or improperly stored, transported, handled, installed, connected, operated, used or maintained. In the event of unauthorized modification of the Products including, where products, parts or attachments for use in connection with the Products are available from Henkel, the use of products, parts or attachments which are not manufactured by Henkel, no claim shall be allowed.

No Products shall be returned to Henkel for any reason without prior written approval from Henkel. Products shall be returned freight prepaid, in accordance with instructions from Henkel.

NO WARRANTY IS EXTENDED TO ANY EQUIPMENT WHICH HAS BEEN ALTERED, MISUSED, NEGLECTED, OR DAMAGED BY ACCIDENT.

EXCEPT FOR THE EXPRESS WARRANTY CONTAINED IN THIS SECTION, HENKEL MAKES NO WARRANTY OF ANY KIND WHATSOEVER, EXPRESS OR IMPLIED, WITH RESPECT TO THE PRODUCTS.

ALL WARRANTIES OF MERCHANTABILITY, FITNESS FOR A PARTICULAR PURPOSE, AND OTHER WARRANTIES OF WHATEVER KIND (INCLUDING AGAINST PATENT OR TRADEMARK INFRINGEMENT) ARE HEREBY DISCLAIMED BY HENKEL AND WAIVED BY THE PURCHASER.

THIS SECTION SETS FORTH EXCLUSIVELY ALL OF LIABILITY FOR HENKEL TO THE PURCHASER IN CONTRACT, IN TORT OR OTHERWISE IN THE EVENT OF DEFECTIVE PRODUCTS.

WITHOUT LIMITATION OF THE FOREGOING, TO THE FULLEST EXTENT POSSIBLE UNDER APPLICABLE LAWS, HENKEL EXPRESSLY DISCLAIMS ANY LIABILITY WHATSOEVER FOR ANY DAMAGES INCURRED DIRECTLY OR INDIRECTLY IN CONNECTION WITH THE SALE OR USE OF, OR OTHERWISE IN CONNECTION WITH, THE PRODUCTS, INCLUDING, WITHOUT LIMITATION, LOSS OF PROFITS AND SPECIAL, INDIRECT OR CONSEQUENTIAL DAMAGES, WHETHER CAUSED BY NEGLIGENCE FROM HENKEL OR OTHERWISE.

**Henkel Corporation**

One Henkel Way  
Rocky Hill, CT 06067-3910  
USA

**Henkel Capital, S.A. de C.V.**

Calzada de la Viga s/n Fracc.  
Los Laureles  
Loc. Tulpetlac, C.P. 55090  
Ecatepec de Morelos, MEXICO

**Henkel Loctite Korea**

8F, Mapo Tower, 418,  
Mapo-dong, Mapo-gu,  
Seoul, 121-734, KOREA

**Henkel Canada Corporation**

2515 Meadowpine Boulevard  
Mississauga, Ontario L5N 6C3  
Canada

**Henkel Singapore Pte Ltd**

401, Commonwealth Drive  
#03-01/02 Haw Par Technocentre  
SINGAPORE 149598

**Henkel Japan Ltd.**

27-7 Shin Isogo-cho, Isogo-ku  
Yokohama, 235-0017  
JAPAN

**Henkel Corporation**

**Automotive/ Metals H.Q.**  
32100 Stephenson Hwy,  
Madison Heights 48071  
USA

**Henkel (China) Company Ltd.**

No. 928 Zhang Heng Road,  
Zhangjiang, Hi-Tech Park, Pudong,  
Shanghai, China 201203

**Henkel AG & Co. KGaA**

Standort München  
Gutenbergstraße 3  
85748 Garching b. München  
Deutschland

[www.equipment.loctite.com](http://www.equipment.loctite.com)

® and ™ designate trademarks of Henkel Corporation or its affiliates. ® = registered in the U.S. and elsewhere. ©  
Henkel Corporation. All rights reserved. Data in this operation manual is subject to change without notice.  
Manual P/N: 8904528, Date: 09/24/2014